

ARRIVING IN SPRING 2022

Combining the smart tailoring of a woven shirt with the movement and comfort of a soft knit, this shirt eases between night and day. The polished silhouette complements office wear, while the moisture-wicking fabric make it perfect for post-work play. A back yoke seam notched vent hem, and satin-finished buttons extend the contemporary profile.

Fabric+Weight

- 5.5-ounce, 55/40/5 cotton/poly/spandex diamond pique

Features+Benefits

- Moisture-wicking
- Self-fabric, button-down collar
- Rimmed, black satin-finished buttons (White buttons on white)
- Back yoke
- Self-turned cuffs and hem
- Notched vents

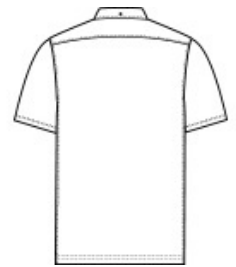
\*\*

CARE INSTRUCTIONS

Machine Wash Cold With Like Colors. Do Not Use Fabric Softener. Do Not Bleach. Tumble Dry Low. Warm Iron If Necessary.



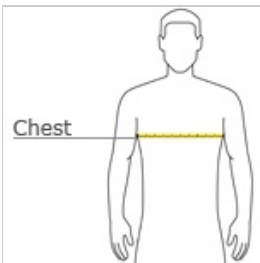
front



back



HOW TO MEASURE



CHEST WIDTH

Measure under the arm and around the fullest part of the chest with arms down, keeping tape horizontal.

SIZE CHART

	XS	S	M	L	XL	2XL	3XL	4XL
Chest	32-34	35-37	38-40	41-43	44-47	48-51	52-56	57-61

COLOR INFORMATION



Anchor Grey  
PMS 426C



Anchor Grey  
Heather  
PMS 426C



Deep Black  
PMS BLACK C



Townsend Green  
PMS NO MATCH



White