



Carhartt® Thermal-Lined Duck Active Jac. CT106678



Whether you're on a land survey or construction road crew, this hooded jacket is designed to keep you comfortable when the weather is iffy.

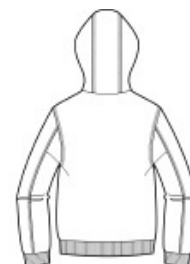
- 12-ounce, firm hand, 100% ring spun cotton duck canvas
- Wind Fighter® technology tames wind
- 100% polyester thermal lining
- Attached thermal-lined three-piece hood with draw cord closure
- Full-length brass front zipper
- Two interior pockets: one zippered, one hook and loop
- Two large lower-front pockets
- Rib knit cuffs and waistband
- Carhartt-strong, triple-stitched main seams
- Carhartt label sewn on left pocket
- Loose fit

CARE INSTRUCTIONS

Color Black: Machine wash cold with like colors. Do not bleach. Tumble dry low remove promptly. Steam iron shell only. All colors except Black: Machine wash warm with like colors. Do not bleach. Tumble dry medium remove promptly. Steam iron shell only.

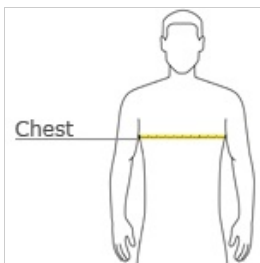


front



back

HOW TO MEASURE



CHEST WIDTH

Measure under the arm and around the fullest part of the chest with arms down, keeping tape horizontal.

SIZE CHART

	S	M	L	XL	2XL	3XL	4XL	5XL
Chest	34-36	38-40	42-44	46-48	50-52	54-56	58-60	62-64

COLOR INFORMATION

Please note: PMS code information is shown only when an exact match is available.



Black
PMS BLACK C



Carhartt Brown
PMS 463C



Dark Navy
PMS 533C