

SPORT-TEK®

DISCONTINUED Sport-Tek® Ladies Tricot Track Pant. LPST91



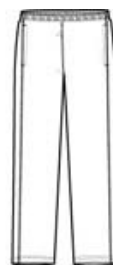
With an active team, you need track gear that can keep up. Made from comfortable tricot, the relaxed styling of our coordinating jackets and pants allow ample room for workouts, while the athletic-inspired styling ensures your logo stands out.

- 100% polyester tricot
- Tag-free label
- Soft-brushed backing
- Flatlock stitching throughout
- Side seam pockets
- No back pockets
- Elastic waistband with draw cord
- Extended leg zippers

**Please note: This product is transitioning from woven labels to tag-free labels. Your order may contain a combination of both labels*

CARE INSTRUCTIONS

Machine wash cold, gentle cycle with like colors. Use mild detergent, remove immediately. Do not allow to lay on itself when wet. Do not bleach. Tumble dry low. Cool iron, if needed.

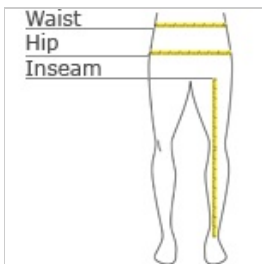


front



back

HOW TO MEASURE



WAIST

Measure around the smallest part of the natural waist.

HIPS

With feet together, measure around the fullest part of hips, keep tape horizontal.

INSEAM

Measure a similar style pant that fits well and is the desired length. Measure from the crotch seam to the hem.

SIZE CHART

| | XS | S | M | L | XL | XXL | 3XL | 4XL |
|--------|--------|-------|--------|-------|--------|-------|--------|-------|
| Size | 2 | 4/6 | 8/10 | 12/14 | 16/18 | 20 | 22 | 24 |
| Waist | 24-26 | 27-28 | 29-30 | 31-33 | 34-35 | 36-37 | 38-39 | 40-41 |
| Hip | 32-34 | 35-36 | 37-38 | 39-41 | 42-43 | 44-45 | 46-47 | 48-49 |
| Inseam | 30 1/2 | 31 | 31 1/2 | 32 | 32 1/2 | 33 | 33 1/2 | 34 |

COLOR INFORMATION

Please note: PMS code information is shown only when an exact match is available.